

\$549,000 - 337 Springbeauty Drive, Silverthorne

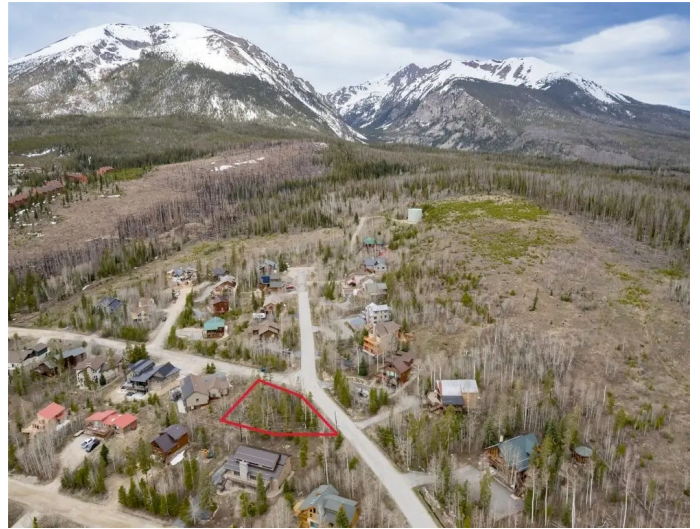
MLS® #S1057864

\$549,000

Bedroom, 0.00 Bathroom,
Land on 0.35 Acres

CORTINA SUB, Silverthorne, CO

Design your ideal mountain retreat on this fantastic lot in Cortina Sub. Located near the top of the subdivision this 0.35-acre parcel can offer scenic views with a prime location. This gentle sloping lot is perfectly set for a walk out home design. This location is perfect for the outdoor enthusiasts with the nearby hiking and biking trails at the Upper Mesa Cortina tailhead, and world class skiing at Keystone, Copper, Breck and A-Basin. Summer, Winter, Fall or Spring, this property has it all in a central Silverthorne location.



Essential Information

MLS® #	S1057864
Price	\$549,000
Bathrooms	0.00
Acres	0.35
Type	Land
Sub-Type	Unimproved Land
Status	Closed

Community Information

Address	337 Springbeauty Drive
Area	Wilderness/Silverthorne
Subdivision	CORTINA SUB
City	Silverthorne
County	Summit
State	CO
Zip Code	80498

Amenities

Utilities Cable Available, Electricity Available, Natural Gas Available, Municipal Utilities, Trash Collection, Water Available, Sewer Available

Exterior

Lot Description See Remarks

School Information

Elementary Silverthorne
Middle Summit
High Summit

Additional Information

Date Listed May 15th, 2025
HOA Fees 100
HOA Fees Freq. Annually

Listing Details

Listing Office RE/MAX Properties of the Summit



Copyright © 2025 SAR MLS. The information displayed herein was derived from sources believed to be accurate, but has not been verified by SAR MLS.

Buyers are cautioned to verify all information to their own satisfaction.

This information is exclusively for viewers' personal, non-commercial use. Any republication or reproduction of the information herein without the express permission of the SAR MLS is strictly prohibited.

Listing information last updated on October 12th, 2025 at 5:51am MDT