

\$615,000 - 740 Blue River Parkway A35, Silverthorne

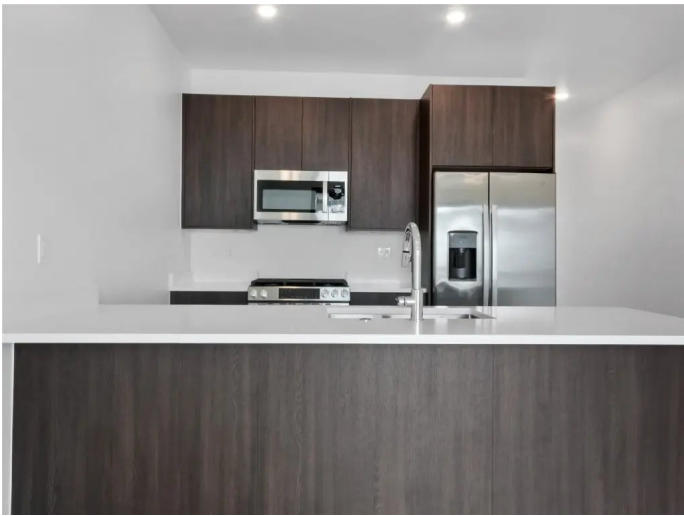
MLS® #S1057095

\$615,000

1 Bedroom, 1.00 Bathroom, 750 sqft
Residential

APRES SHORES, Silverthorne, CO

Move in ready this April 2025! This top floor premium 1 bedroom condo features a flex space that can be used as an additional sleeping space or an office. These massive west facing Gore Range Views provide you with the iconic Colorado sunsets right out your living room deck. Designed with the dark and sleek Taos Package complete with the Como Ash cabinetry and the White Ash flooring. Take one of the last opportunities to buy into this coveted riverfront community. Enjoy gold medal fishing, world class skiing, biking, hiking trails, and more. Sit back and relax during AprÃ’s hour at the onsite clubhouse or take a stroll along the riverfront path that will soon connect to restaurants, shopping, and entertainment.



Built in 2025

Essential Information

MLS® #	S1057095
Price	\$615,000
Bedrooms	1
Bathrooms	1.00
Full Baths	1
Square Footage	750
Year Built	2025
Type	Residential
Sub-Type	Condominium
Status	Closed

Community Information

Address	740 Blue River Parkway A35
Area	Wilderness/Silverthorne
Subdivision	APRES SHORES
City	Silverthorne
County	Summit
State	CO
Zip Code	80498

Amenities

Utilities	Electricity Available, Natural Gas Available, High Speed Internet Available, Sewer Available, Trash Collection, Water Available, Cable Available, Sewer Connected
Parking	Detached Carport
View	Mountain(s), River, Southern Exposure, Creek/Stream

Interior

Interior	Tile, Vinyl
Interior Features	Fireplace, Cable TV
Appliances	Dishwasher, Disposal, Gas Range, Microwave Hood Fan, Microwave, Refrigerator
Heating	Common, Radiant Floor
Fireplace	Yes
Fireplaces	Gas

Exterior

Exterior	Wood Frame
Lot Description	City Lot, See Remarks
Roof	Architectural, Shingle
Construction	Wood Frame
Foundation	Poured

School Information

Elementary	Silverthorne
Middle	Summit
High	Summit

Additional Information

Date Listed	April 7th, 2025
HOA Fees	2712

HOA Fees Freq. Annually

Listing Details

Listing Office Colorado R.E. Summit County



Copyright © 2025 SAR MLS. The information displayed herein was derived from sources believed to be accurate, but has not been verified by SAR MLS.

Buyers are cautioned to verify all information to their own satisfaction.

This information is exclusively for viewers' personal, non-commercial use. Any republication or reproduction of the information herein without the express permission of the SAR MLS is strictly prohibited.

Listing information last updated on October 12th, 2025 at 11:36am MDT