

\$639,000 - 75 Spyglass Lane 75, Silverthorne

MLS® #S1051088

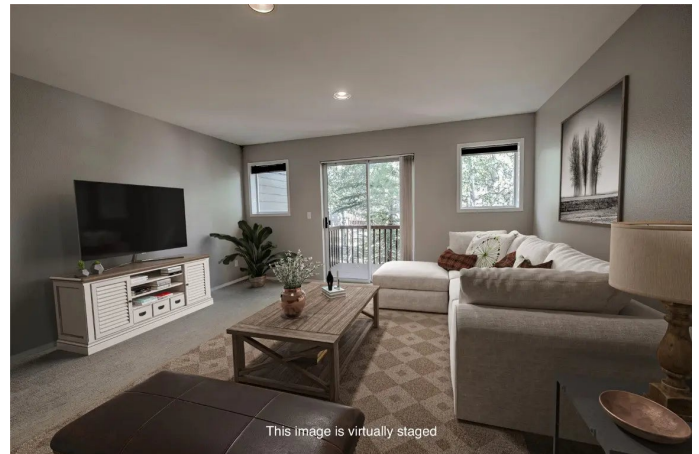
\$639,000

2 Bedroom, 2.00 Bathroom, 1,166 sqft

Residential on 0.02 Acres

SPYGLASS AT WILDERNEST
TOWNHOMES, Silverthorne, CO

Welcome to Spyglass Townhome! Nestled in the tranquil woods of the Wildercrest area, this freshly carpeted and painted, 2 bedroom, 2 bathroom townhome offers a private one car garage and unique multi-level layout that blends functionality with style. The bedrooms are thoughtfully situated on the lower level for privacy, while upstairs, the bright and open living space creates an inviting atmosphere. The sliding glass doors from the living room open to your own private deck that is perfect for relaxing and enjoying the serene surroundings. The kitchen has an open concept complete with a tiled granite counters, an island breakfast bar, separate eating area and large pantry. The in-floor radiant heat will warm your feet throughout the home. Enjoy the convenience of an stack washer/dryer on the lower level where the bedrooms are. Easy access to hiking, mountain biking, and cross-country skiing trails within the expansive national forest network that surrounds the complex. Located just steps from the free Summit Stage bus stop, this home ensures seamless access to downtown Silverthorne and all that Summit County has to offer. A few pictures are virtually staged in order to show possibilities



Built in 1996

Essential Information

MLS® #	S1051088
Price	\$639,000
Bedrooms	2
Bathrooms	2.00
Full Baths	2
Square Footage	1,166
Acres	0.02
Year Built	1996
Type	Residential
Sub-Type	Townhouse
Status	Closed

Community Information

Address	75 Spyglass Lane 75
Area	Wilderness/Silverthorne
Subdivision	SPYGLASS AT WILDERNEST TOWNHOMES
City	Silverthorne
County	Summit
State	CO
Zip Code	80498

Amenities

Utilities	Electricity Available, Natural Gas Available, Municipal Utilities, Sewer Available, Trash Collection, Water Available, Cable Available, Sewer Connected
Parking	Detached, Garage
# of Garages	1
View	Meadow, Mountain(s)

Interior

Interior	Carpet, Tile
Interior Features	Entrance Foyer, Eat-in Kitchen, Kitchen Island, Pantry
Appliances	Dishwasher, Disposal, Microwave Hood Fan, Microwave, Range, Refrigerator, Dryer, Washer
Heating	Individual, Natural Gas, Radiant Floor

Exterior

Exterior	Frame
Lot Description	Near Public Transit

Roof	Asphalt, Composition
Construction	Frame
Foundation	Poured

School Information

Elementary	Silverthorne
Middle	Summit
High	Summit

Additional Information

Date Listed	July 1st, 2024
HOA Fees	3960
HOA Fees Freq.	Annually

Listing Details

Listing Office	Re/Max Properties/66
----------------	----------------------



Copyright © 2025 SAR MLS. The information displayed herein was derived from sources believed to be accurate, but has not been verified by SAR MLS.

Buyers are cautioned to verify all information to their own satisfaction.

This information is exclusively for viewers' personal, non-commercial use. Any republication or reproduction of the information herein without the express permission of the SAR MLS is strictly prohibited.

Listing information last updated on October 12th, 2025 at 11:21am MDT